

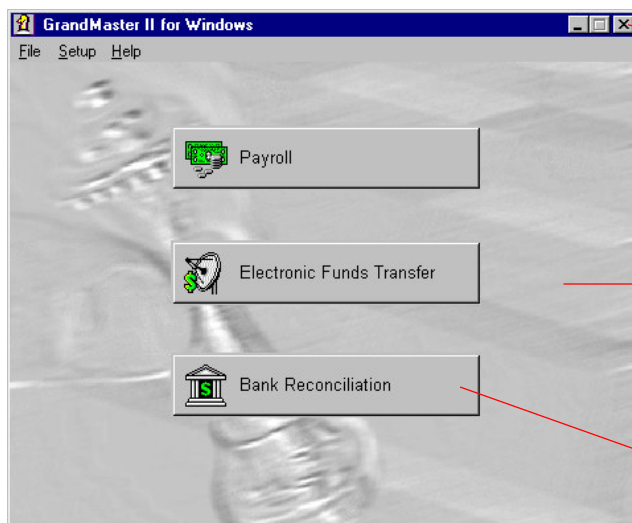
# GrandMaster® II for Windows



*GrandMaster II for Windows* can transform your in-house payroll into a payday savings for your organization today! This powerful system allows you to economically manage all of your payroll functions -- from basic payroll operations to the most complex payroll situation. **GrandMaster II for Windows** is designed for organizations ranging from 10 to 5,000+ employees.

The program integrates Payroll, Job Costing, Electronic Funds Transfer and Bank Reconciliation modules into a single, cost-effective solution. Each user-friendly module shares a common database and has been designed to operate independently or as part of a fully integrated management system. Simply choose the modules you need to more effectively manage your payroll and personnel requirements.

Join the growing number of *CanPay* Payroll Partners that have switched to in-house payroll to save time, reduce costs and make informed management decisions while providing superior service to their employees. We invite you to examine this simple but brilliant alternative to the hidden costs associated with out-sourcing payroll.



Full Windows functionality makes learning intuitive and fast.

The GrandMaster II for Windows System Manager window launches you into each powerful module.

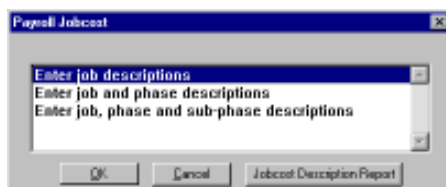
Use only the modules you require. Or choose them all for a complete payroll management system!

## Power-Packed Features:

- Job Costing
- Electronic Funds Transfers
- Bank Reconciliation
- Network Your Payroll
- Online Database
- Interface With Other Systems
- Table Driven Earnings and Deductions
- Report Writer

## Job Costing

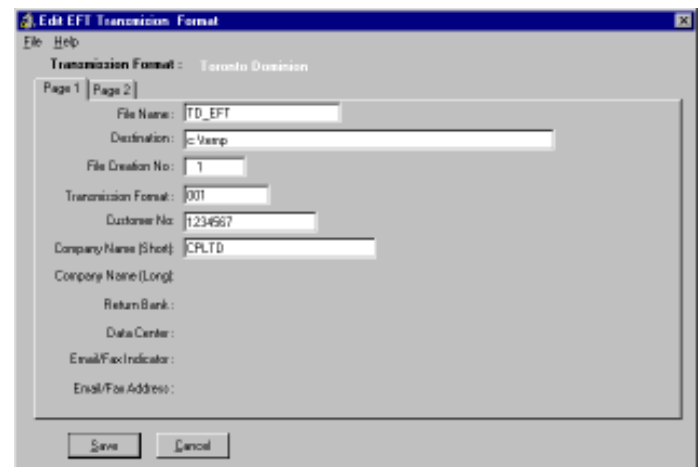
The Job Costing module provides a comprehensive facility for recording employee work time. It allows you to assign labour burden amounts or percentage rates to particular jobs or tasks. The Job Costing module further allows you to break down a particular job by phase and sub-phase with each having its own burden and rate assigned. When entering time for an employee, you may also apply a particular job assignment that will distribute the costs associated to the employee's time based on the burden amount, percentage rate or actual amounts.



## Electronic Funds Transfers

The Electronic Fund Transfers module (EFT) allows you to electronically transfer net payroll amounts directly into an individual employee's bank account, rather than issuing a cheque. This can save you valuable employee time on payday as well as reduce cheque clearing costs.

General requirements include a modem and communications software on the user's computer, and prior arrangement with your company's bank. The EFT system is flexible and can be setup to work with any banking format.



An employee's pay can be distributed up to three separate bank accounts.

## Bank Reconciliation

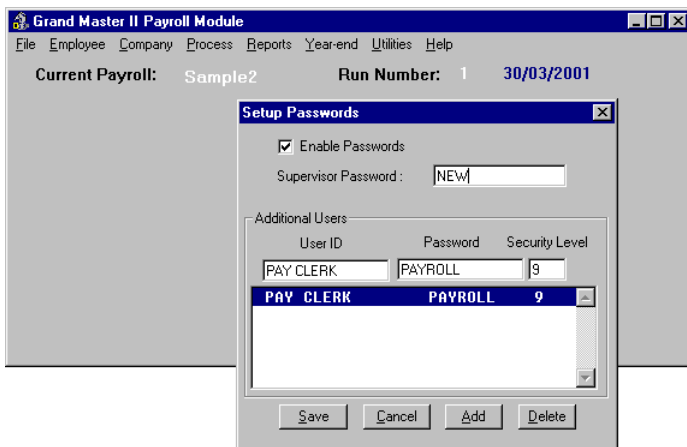
The Bank Reconciliation module allows you reconcile the bank statement issued by your bank to cheques issued. You can configure as many as 10 separate Bank Reconciliation files, each being accessible by up to 10 users (with assigned passwords). Cheques can be imported directly from the Payroll System or manually entered within the Bank Reconciliation module.



You can create reports on outstanding and returned cheques and view them on the screen, send them to a disk file, or directly to any printer. Returned cheques can be kept on record indefinitely or purged after a given date. You can also exported cheques to a spreadsheet program or import them into other bank reconciliation programs.

## Network Your Payroll

The multi-user features are available for larger companies and allow up to ten people to enter payroll information at one-time. Access is controlled by a user passwords and a multi-level Access Code is used to limit access to specific information.

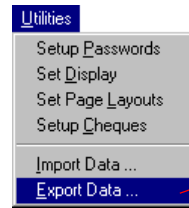


## Online Database

The online database offers immediate access to all payroll information for quick turnaround with payments, reports, updates, forecasts and management requests.

## Interface With Other Systems

A user defined Import/Export function allows you to interface your payroll to/from spreadsheets, electronic time clocks, human resource systems and other accounting systems.



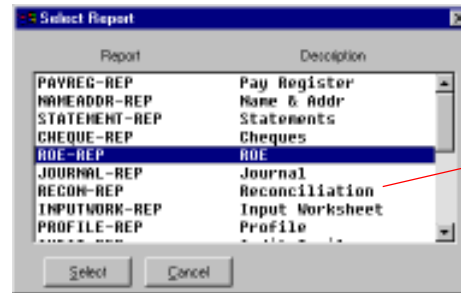
Export to Comma Delimited or Fixed format text files using any one of 100+ unique Export tags.

## Table Driven Earnings and Deductions

Union pay scales or deductions/benefits can be entered in a table for easy access and updating.

## Report Writer

The built-in report writer allows you to custom design your own payroll reports on a regular or one-time basis. Reports such as union, dental group insurance, etc. can easily be setup in the format that best suits your requirements.



Choose from a large variety of standard reports or create your own special-purpose report.

## Pricing

Description	Retail	Updates	System Requirements
<b>Payroll</b>	\$1,495.00	\$680.00	<ul style="list-style-type: none"> <li>• Pentium® processor or equivalent.</li> <li>• Windows 9x, ME, NT, 2000 or XP.</li> <li>• 32 MB of RAM (64 or greater recommended).</li> <li>• Approximately 15MB of hard disk space for complete <b>GrandMaster II for Windows</b> installation (all modules). Additional 100KB (average) of disk space per year for each active employee.</li> </ul>
<b>Job Costing</b>	\$ 640.00	\$150.00	
<b>Electronic Funds Transfer</b>	\$ 195.00	\$150.00	
<b>Bank Reconciliation</b>	\$ 195.00	n/c	



CanPay Software Inc.  
411 Goulet Street  
Winnipeg, MB R2H 3C7  
Canada



**E-mail:** sales@canpay.com  
**Phone:** (204) 987-8520  
**Fax:** (204) 987-8506  
**Toll Free:** (800) 665-5129  
**Website:** www.canpay.com